

Product Name: Gen. 3 Silicone Anti-Colic Nipple
Material: Medical-Grade Silicone
Dimensions: 72 × 72 × 58mm
Recommended Age: Slow Flow - Suitable for children aged 0-3 months
Medium Flow - Suitable for children aged 3-6 months
Variable Flow - Suitable for children aged 6 months+

Product Description:

The Silicone Anti-Colic Nipple is compatible with all Gen. 3 Bottles, transforming them into a handy baby bottle!

With a quick twist of your Gen. 3 bottle top, you can swap out your baby bottle nipple for any of our range of optional interchangeable attachments (each sold separately). We have our famous breast pump flange that lets you express directly into the bottle, a feeding spoon dispenser for when your baby moves on to solids, a sippy bottle top to help your independent toddler transition from a bottle to a cup and a sealing disk to preserve any leftover food or milk after feeding.

Features:

- Fully compatible with all Gen. 3 Baby Bottles.
- Soft, naturally-shaped silicone nipple designed to closely mimic breastfeeding.
- Made of premium medical-grade silicone.
- Dual anti-colic vents prevent unwanted air intake.
- Safe in microwaves, boiling water and sterilisers.
- BPA, PVC and phthalate-free.

Cleaning and Care:

Before first use, clean the product and then place in boiling water for 5 minutes. This is to ensure hygiene. Wash before and after each subsequent use. Although dishwasher safe, we recommend hand washing in warm soapy water, removing any food residues and rinsing thoroughly. If you use a brush to clean the tip of the feeding nipple, clean it as carefully as possible to avoid damage. Do not use abrasive cleaning agents. Only soft bristle brushes or soft sponges should be used. To sterilise, use a steam steriliser or boil in water for 2-3 minutes. Store nipple in a dry, covered container and avoid direct sunlight.

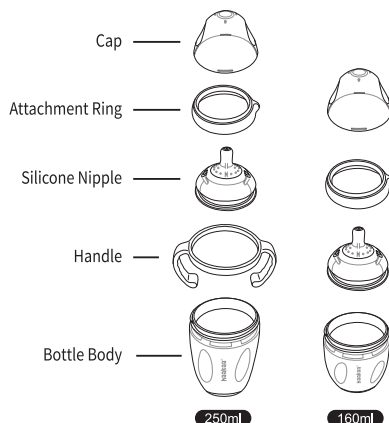
Caution:

For your child's safety and health

WARNING!

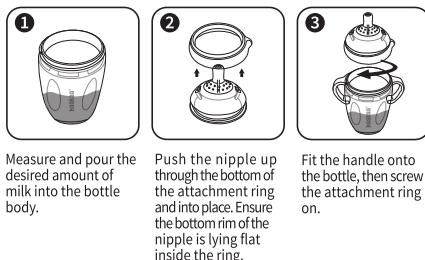
- Continuous and prolonged sucking of fluids will cause tooth decay.
- Always check food temperature before feeding.
- Throw away at the first signs of damage or weakness.
- Keep components not in use out of the reach of children.
- Never attach to cords, ribbons, laces or loose parts of clothing. The child can be strangled.
- Never use the feeding nipple as a soother.
- Always use this product with adult supervision.
- This product is not a toy. Do not use this product for anything other than its intended use.
- Inspect before each use, pulling the feeding nipple in all directions. Throw away at the first signs of damage or weakness.
- Do not leave feeding nipple in direct sunlight or heat, or leave in sterilising solution for longer than recommended, as this may weaken the product.

Silicone Baby Bottle Diagram

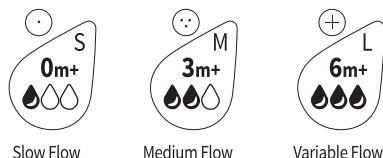


NOTE: Handle is only included with the 8 oz./250ml bottle.

Assembly Instructions



Your baby will require different flow rates as they grow.



Age range for each flow rate is just a suggestion and may vary according to each baby's needs or preferences.

PLEASE NOTE: As silicone can stick to itself, the nipple hole or valve opening may seal. To fix, gently rub the end of the nipple or valve between your fingers until the hole reopens. We recommend replacing the nipple every 3 months.