

haakaa®

GEN. 3 SILICONE FEEDING SPOON BOTTLE

English

Product Name: Gen. 3 Silicone Feeding Spoon Bottle

Materials: Bottle Body - Medical-Grade Silicone, PPSU

Attachment Ring - PP

Feeding Spoon Attachment - Medical-Grade Silicone

Dimensions: Bottle Body (160ml) - 77 x 77 x 71mm

Bottle Body (250ml) - 77 x 77 x 105mm

Feeding Spoon - 72 x 72 x 77mm

Attachment Ring - 84 x 79 x 20mm

Cap - 75 x 75 x 50mm

Volume: 5.4 oz. / 160ml, 8 oz. / 250ml

Colours: Peach / Grey

Standard: EN 14372

Product Description:

The Haakaa Silicone Feeding Spoon Bottle is the perfect minimal-mess solution for feeding your little one favourites like yoghurt and purée. Simply fill with homemade goodness and all you need to do is give the silicone bottle a squeeze to dispense food right onto the spoon. What makes it even better, is that the Gen. 3 base bottle is fully compatible with our range of Gen. 3 attachments (each sold separately). With a simple twist, you can convert this product into a baby bottle, breast pump, sippy bottle or storage container. It's a system that truly grows with your baby's needs!

Features:

- The easy, clean and fun way to start your baby on their solids journey.
- Fill with food and squeeze to dispense onto the spoon.
- Control the flow of food with a simple squeeze of the bottle.
- Cross-cut valve allows for both thin purees and slightly chunkier solids to be fed.
- Soft and gentle on little mouths.
- Easy-to-read millilitre and ounce measurements.
- Made with premium medical-grade silicone.
- Wide base to prevent accidental spills.
- Compatible with all Haakaa Gen. 3 Silicone Bottle Series attachments.
- Safe in microwaves, dishwashers, sterilisers and boiling water.
- BPA, PVC and phthalate-free.

Cleaning and Care:

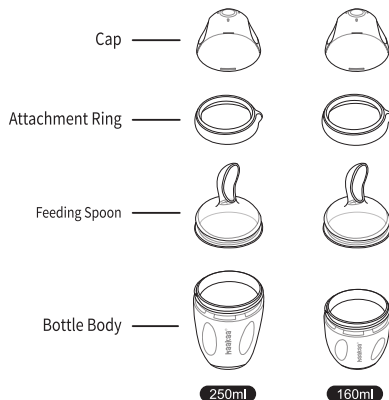
Before first use, disassemble and clean the product before placing non-plastic components in boiling water for 5 mins to sterilise. To sterilise after subsequent use, use a steam steriliser or boil in water for 2-3 minutes. To sterilise plastic components, boil in water for no longer than 2-3 minutes. Wash before and after each use. Although dishwasher safe, we recommend hand washing in warm, soapy water and rinsing and drying thoroughly. Do not use any bleach-based cleaners or tablets to sterilise or clean your Haakaa products.

Caution:

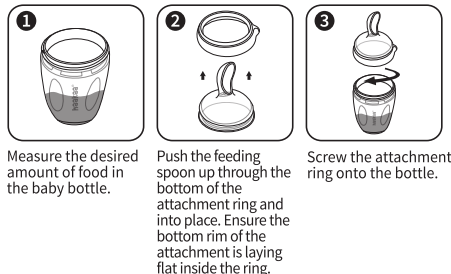
For your child's safety and health WARNING!

- Continuous and prolonged sucking can affect dental health. Be sure to brush your child's teeth regularly.
- For your child's safety, never attach product to cords, ribbons, laces or loose parts of clothing, as it can become wrapped around their neck.
- Check product condition regularly. Replace if this product shows any signs of damage.
- Do not store near any sharp objects.
- Only soft bristle brushes or soft sponges should be used to clean this product. Hard scourers may scratch the surface.
- This product is not a toy. Do not use this product for anything other than its intended use.
- Store product in a cool dry place and avoid direct sunlight.
- Product only to be used with the assistance of an adult.
- Take extra care when microwave heating; localised overheating can occur. Always mix the heated food or liquid and check the temperature before feeding.

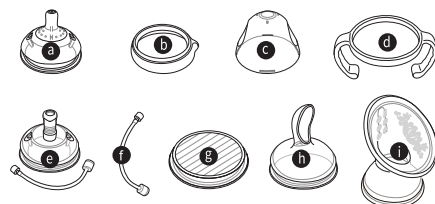
Silicone Baby Bottle Diagram



Assembly Instructions



Optional Interchangeable Attachments



Haakaa Silicone Baby Bottles are compatible with all Gen. 3 Silicone Bottle Series attachments.

- a) Silicone Bottle Anti-Colic Nipple
- b) Silicone Bottle Attachment Ring
- c) Silicone Bottle Replacement Cap
- d) Silicone Bottle Handle
- e) Silicone Bottle Sippy Spout
- f) Silicone Bottle Automatic Straw - S/L
- g) Silicone Bottle Sealing Disk
- h) Silicone Feeding Spoon Head
- i) Silicone Breast Pump Flange

Please note: Optional interchangeable attachments each sold separately.

♥ Volume measurements are an approximation and should be used for general reference only.