

haakaa®

SILICONE SIPPY SPOUT BOTTLE

PRODUCT MANUAL

English

Product Name: Gen. 3 Silicone Sippy Spout Bottle
Materials: Bottle Body - Medical-Grade Silicone, PPSU
 Attachment Ring, Cap- PP
 Bottle Sippy Spout - Food-Grade Silicone, Stainless Steel
Dimensions: Bottle Body - 77 x 77 x 105mm
 Sippy Spout - 70 x 70 x 55mm
 Automatic Straw - 19 x 19 x 160mm
 Attachment Ring - 84 x 79 x 20mm
 Cap - 75 x 75 x 50mm
 Handle - 120 x 65 x 80mm

Volume: 250ml
Standard: EN 14350

Product Description:

The Haakaa Silicone Sippy Spout Bottle is the perfect transition from bottle to cup for independent little ones! With its 100% silicone mouthpiece, our Sippy Spout Bottle is super soft and gentle on delicate mouths. The most exciting feature of our Silicone Sippy Spout Bottle is that it is fully compatible with all Gen. 3 Silicone Bottle Series attachments! With a quick twist of the top, you can swap out your sippy bottle lid for any of our range of optional interchangeable attachments (each sold separately). We have our famous breast pump flange that lets you express directly into the bottle, a baby bottle lid to let you feed your little one expressed milk, a feeding spoon dispenser when your baby moves on to solids and sealing disk to transform your bottle body into a container!

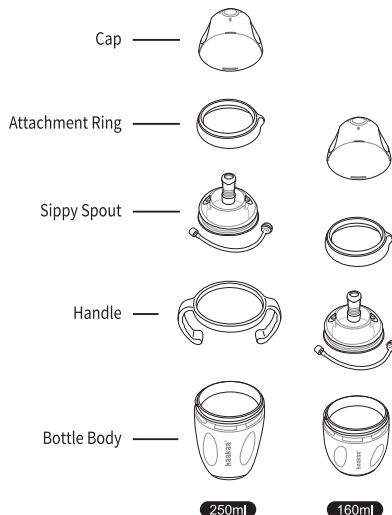
Features:

- Helps with a smoother transition from bottle to cup!
- Weighted automatic straw lets your little one drink without tipping their head back.
- Bottle made with premium medical-grade silicone.
- Easy-to-read millilitre and ounce measurements.
- Wide base to prevent accidental spills.
- Safe in microwaves, dishwashers, sterilisers and boiling water.
- Compatible with all Haakaa Gen. 3 Silicone Bottle Series attachments.
- BPA, PVC and phthalate-free.

Cleaning and Care:

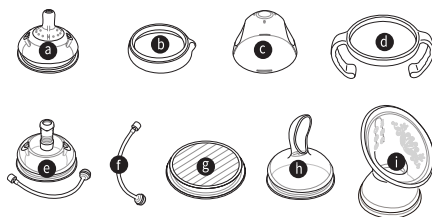
Before first use, disassemble and clean the product before placing non-plastic components in boiling water for 5 mins to sterilise. To sterilise after subsequent use, use a steam steriliser or boil in water for 2-3 minutes. To sterilise plastic components, boil in water for no longer than 2-3 minutes. Wash before and after each subsequent use. Although dishwasher safe, we recommend hand washing in warm, soapy water and rinsing and drying thoroughly. Other common methods of heating, cleaning, storage and use not listed in this manual may damage the product. Do not use any bleach-based cleaners or tablets to sterilise or clean your Haakaa products. Do not boil or microwave stainless steel parts. Only soft bristle brushes or soft sponges should be used to clean this product. Hard scourers may scratch the surface. Store product in a cool, dry place and avoid direct sunlight.

Silicone Baby Bottle Diagram



Note: Handle is only compatible with the 250ml bottle.

Optional Interchangeable Attachments



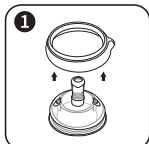
Haakaa Silicone Baby Bottles are compatible with all Gen. 3 Silicone Bottle Series attachments.

- a) Silicone Bottle Anti-Colic Nipple
- b) Silicone Bottle Attachment Ring
- c) Silicone Bottle Replacement Cap
- d) Silicone Bottle Handle
- e) Silicone Bottle Sippy Spout
- f) Silicone Bottle Automatic Straw - S/L
- g) Silicone Bottle Sealing Disk
- h) Silicone Feeding Spoon Head
- i) Silicone Breast Pump Flange

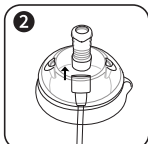
Please note: Optional interchangeable attachments each sold separately.

♥ Volume measurements are an approximation and should be used for general reference only.

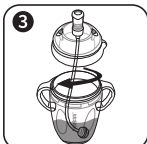
Assembly Instructions



Push the sippy spout up through the bottom of the attachment ring and into place. Ensure the bottom rim of the sippy spout attachment is laying flat inside the ring.



Attach the automatic straw to the base of the sippy spout.



Fit the handle onto the bottle, then screw the attachment ring on.

Caution:

For your child's safety and health

WARNING!

- Continuous and prolonged sucking of fluids will cause tooth decay.
- Always check food temperature before feeding
- Throw away at the first signs of damage or weakness.
- Keep components not in use out of the reach of children.
- Never attach to cords, ribbons, laces or loose parts of clothing. The child can be strangled.
- Never use feeding teats as a soother.
- Always use this product with adult supervision.
- Do not store near any sharp objects.
- This product is not a toy. Do not use this product for anything other than its intended use.
- Do not microwave the straw as it contains stainless steel. Take extra care if microwaving the silicone bottle; localised heating can occur. Always mix the heated food or liquid and check the temperature before feeding.
- Inspect the feeding teat before each use and pull the feeding teat in all directions. Throw away at the first signs of damage or weakness.
- Do not leave feeding teat in direct sunlight or heat, or leave in sterilising solution for longer than recommended, as this may weaken the product.