

| | |
|-------------------------|---|
| Product Name: | Octopus Freeze-N-Feed Mini Combo |
| Materials: | Feeder Top, Attachment Ring, Mini Pineapple Nibble Tray - Food-Grade Silicone Pouch - Medical-Grade Silicone Cap - PP |
| Dimensions: | 1 × Octopus Fresh Food Feeder - 66 × 66 × 138mm 1 × Mini Pineapple Nibble Tray - 90 × 64 × 33mm |
| Colours: | Octopus Fresh Food Feeder (4 colour options) - Blush/Lavender/Mustard/Pea Green Mini Nibble Tray - Pea Green |
| Recommended Age: | 4 months+ |
| Standard: | EN 14372 |

Product Description:

The Octopus Freeze-N-Feed Mini Combo is the perfect way to safely introduce new flavours to your baby while providing cooling relief for teething gums! Combining the fun octopus version of our Fresh Food Feeder with the mini Pineapple Nibble Tray, this combo lets you freeze perfectly-sized portions of food for your child to explore. As with all our Fresh Food Feeders, they can discover new flavours and textures without the risk of choking. The adorable octopus shape is not only entertaining for little fingers, but it also gives you two ways to stand the Feeder, keeping things clean no matter what! To use, simply fill the Nibble Tray compartments with breastmilk, puréed food, or other favourites and freeze. Pop one out when required and place in the Feeder pouch, assemble, and seal tight. For those who need more treats, the full-sized Pineapple Nibble Tray (sold separately) comes with a huge NINE compartments, keeping you going for longer!

Features:

- Soft silicone pouch has small holes that allow only tiny, digestible pieces of food to pass through.
- Feeder's non-toxic silicone design is durable and safe for your baby to chew and suck on.
- Feeder has a secure lid to prevent choking hazards.
- The Octopus's hollow 3D design allows for easy gripping and inspires baby's imagination!
- Nibble Tray is ideal for making perfectly-sized frozen portions for the Feeder pouch.
- Freeze breastmilk or other favourites in the Nibble Tray for fun, safe food exploration.
- Feet on the cap and the feeder top allow the Feeder to be stored upright.
- The Nibble Tray and Feeder handles allow for easy hang-drying and storage.
- Disassembles for easy cleaning - no spaces for bacteria to breed.
- BPA, PVC and phthalate-free.

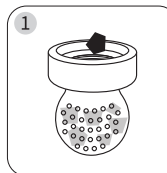
Cleaning and Care:

Before first use, disassemble and clean the product before placing silicone components in boiling water for 5 minutes to sterilise. This is to ensure hygiene. Wash before and after each use. Although dishwasher safe, we recommend hand washing with warm, soapy water and rinsing thoroughly. To sterilise after subsequent use, use a steam steriliser or boil in water for 2-3 minutes. To sterilise PP cap, boil in water for no longer than 2-3 minutes. Only soft bristle brushes or soft sponges should be used to clean this product as hard scourers may scratch the surface. Do not use any bleach-based cleaners or tablets to sterilise or clean your Haakaa products. Silicone pouch may absorb the colours of foods it comes in contact with. To minimise discolouring, wash immediately after use. Do not store near any sharp objects. Store product in a cool, dry place and avoid direct sunlight.

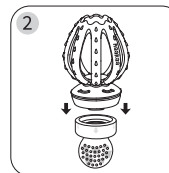
PLEASE NOTE: Solid food is recommended for babies 4-6 months+. Always consult your medical professional for advice regarding infants and food allergies or if planning to introduce solids earlier than recommended.

Instructions:

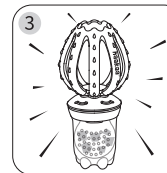
Using the Fresh Food Feeder



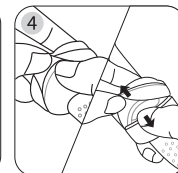
Place soft or frozen food inside the pouch.



Once filled, press the Feeder lid tightly onto the attachment ring.



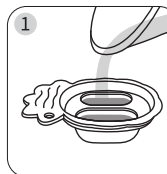
After assembly, let your little one explore food independently. Cover pouch with the cap when not in use.



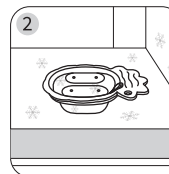
DISASSEMBLY: Use your thumb to pry up the bottom edge of the lid (see the arrows), then pull down the top edge of the attachment ring.

NOTE: The Fresh Food Feeder is designed to be harder to open than other products to prevent choking hazards.

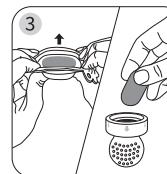
Using the Nibble Tray



Fill each tray compartment with breastmilk, purée or other favourites.



Cover with the lid then place in the freezer.



Once frozen, pop out a portion to put into your Fresh Food Feeder.



After assembling the Feeder, give it to your baby for some cooling relief!

Caution:

For your child's safety and health

WARNING!

- Always use this product with adult supervision.
- Before each use, inspect the product. Throw away at the first sign of damage or weakness.
- Always check food temperature before feeding.
- Continuous and prolonged sucking can affect dental health. Be sure to brush your child's teeth regularly.
- For your child's safety, never attach product to cords, ribbons, laces or loose parts of clothing, as it can become wrapped around their neck.
- This product is not a toy. Do not use this product for anything other than its intended use.
- Keep all components out of reach of children and pets when not in use.
- Do not heat food while it is inside the Feeder, including in microwaves, ovens, or other heating methods. Always mix pre-heated food to avoid hot spots before placing inside this product.
- Always ensure lid is securely fastened before giving Feeder to your child.