

Product Name: Gen. 3 Silicone Baby Bottle

Materials: Bottle Body - Medical-Grade Silicone, PPSU
Anti-Colic Nipple - Medical-Grade Silicone
Attachment Ring, Cap - PP

Dimensions: Bottle Body (160ml) - 77 x 77 x 71mm
Bottle Body (250ml) - 77 x 77 x 105mm
Nipple - 72 x 72 x 56mm
Attachment Ring - 84 x 79 x 20mm
Cap - 75 x 75 x 50mm

Volume: 5 oz./160ml
8 oz./250ml

Colours: Peach / Grey

Standard: EN 14350

Product Description:

Haakaa's Gen. 3 Silicone Baby Bottle is made of premium medical-grade silicone, making it uniquely soft and safe for little hands to hold, and because the silicone is impact-resistant, there's no need to worry about breakages. The naturally-shaped silicone nipple closely mimics a mother's breast during breastfeeding and is designed to be more readily accepted by babies.

The most exciting feature of our Silicone Baby Bottle is that it is fully compatible with our multifunctional Gen. 3 System and the rest of our silicone bottle attachments! With a quick twist of the top, you can swap out your baby bottle teat for any of our range of optional interchangeable attachments (each sold separately). We have our famous breast pump flange that lets you express directly into the bottle, a feeding spoon dispenser for when your baby moves on to solids, a sippy bottle top to help your independent toddler transition from a bottle to a cup and a sealing disk to transform your bottle body into a container.

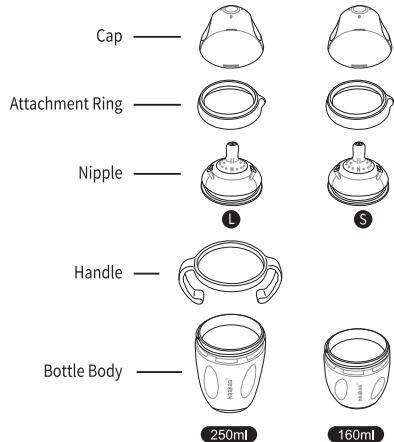
Features:

- Multifunctional design, compatible with all Gen. 3 attachments.
- Soft, naturally-shaped silicone nipple designed to closely mimic breastfeeding.
- Made of premium medical-grade silicone with great anti-impact performance.
- Dual anti-colic vents prevent unwanted air intake.
- Ultra-wide neck design allows for easy cleaning.
- Safe in microwaves, boiling water and sterilisers.
- BPA, PVC and phthalate-free.

Cleaning and Care:

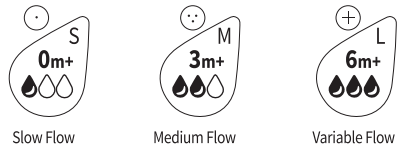
Before first use, disassemble and clean the product before placing non-plastic components in boiling water for 5 minutes to sterilise. To sterilise plastic components, boil in water for no longer than 2-3 minutes. This is to ensure hygiene. Before each subsequent use clean carefully to ensure hygiene. Please wash and flush all parts thoroughly with clean water to remove any food residue, including all areas where food has passed through. Although dishwasher safe, we recommend hand washing with a mild dish detergent and rinsing and drying thoroughly. This bottle can be sterilised with any steam sterilising system or by boiling in water for 2-3 minutes. Do not use UV sterilisers to clean this product as it may impact the lifespan of your bottle. Other common methods of heating, cleaning, storage and use not listed in this manual may damage the product. Please do not use bleach-based cleaners or tablets to clean this product. Only soft bristle brushes or soft sponges should be used to clean this product. Hard scourers may scratch the surface. Store product in a cool, dry place and avoid direct sunlight. Store nipple in a dry sealed container.

Silicone Baby Bottle Diagram



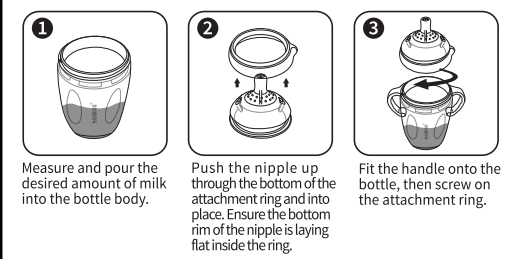
NOTE: Handle is only included with the 250ml bottle.

Your baby will require different flow rates as they grow.



Age range for each flow rate is just a suggestion and may vary according to each baby's needs or preferences.

Assembly Instructions



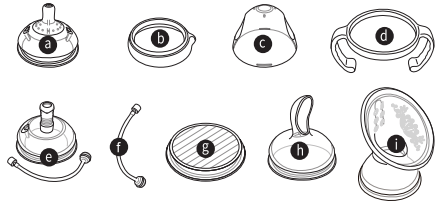
Caution:

For your child's safety and health

WARNING!

- Continuous and prolonged sucking of fluids will cause tooth decay.
- Always check food temperature before feeding.
- Throw away at the first signs of damage or weakness.
- Keep components not in use out of the reach of children.
- Never attach to cords, ribbons, laces or loose parts of clothing. The child can be strangled.
- Never use feeding teats as a soother.
- Always use this product with adult supervision.
- Do not store near any sharp objects.
- Use only as instructed to reduce the risk of product damage.
- This product is not a toy. Do not use this product for anything other than its intended use.
- Inspect the feeding teat before each use and pull the feeding teat in all directions. Throw away at the first signs of damage or weakness.
- Do not leave feeding teat in direct sunlight or heat, or leave in sterilising solution for longer than recommended, as this may weaken the product.
- Take extra care when microwave heating; localised overheating can occur. Always mix the heated food or liquid and check the temperature before feeding.

Optional Interchangeable Attachments



Haakaa Silicone Baby Bottles are compatible with all Gen. 3 Silicone Bottle Series attachments.

- a) Silicone Bottle Anti-Colic Nipple
- b) Silicone Bottle Attachment Ring
- c) Silicone Bottle Replacement Cap
- d) Silicone Bottle Handle
- e) Silicone Bottle Sippy Spout
- f) Silicone Bottle Automatic Straw - S/L
- g) Silicone Bottle Sealing Disk
- h) Silicone Feeding Spoon Head
- i) Silicone Breast Pump Flange

PLEASE NOTE: Optional interchangeable attachments each sold separately.

NOTE: As silicone can stick to itself, the nipple hole or valve opening may seal. To fix, gently rub the end of the nipple or valve between your fingers until the hole reforms. We recommend replacing the nipple every 3 months.

Volume measurements are an approximation and should be used for general reference only. Always follow your country's guidelines and recommendations to safely express and store breastmilk.