

Product Name: Supplemental Feeding Tube & Pouch Set

Materials: Silicone Feeding Tubes, Pouch, Cap, Stopper - Food-Grade Silicone
Tube Connector, Storage Case - PP
Flow Controllers - POM
Medical Tape - Nonwoven Fabric

Contents: 5 x Feeding Tubes - 11 x 11 x 400mm
1 x Feeding Pouch - 117 x 108 x 44mm
1 x Pouch Cap - 43 x 38 x 24mm
1 x Pouch Stopper - 36 x 36 x 61mm
1 x Tube Connector - 35 x 34 x 26mm
5 x Flow Controllers - 30 x 11 x 15mm
1 x Medical Tape - 9100 x 13mm
1 x Storage Case - 72 x 71 x 36mm

Volume: 4 oz./120ml

Product Description:

If you and your baby are experiencing feeding issues, including latching or supply concerns, then Haakaa's Supplemental Feeding Tube & Pouch Set is the ideal way to provide extra supplemental milk quickly, easily and safely. The 120ml pouch and tubes are made of non-toxic 100% food-grade silicone, and the wide pouch opening makes it easy to fill and clean. The pouch even includes a convenient attachment loop to keep it secure during feeding time, while the one-handed flow controllers allow you to adjust the milk flow to suit your baby's needs. This set also includes medical tape to secure the tube to your breast and a handy storage case to keep all the smaller parts neatly tidied away!

Features:

- Provides extra supplemental milk to baby, while also allowing mum and baby to continue breastfeeding.
- Five soft and flexible tubes mean there's always one available.
- Five flow controllers allow for easy adjustment of the speed of milk flow and replacement.
- 120ml squeezable pouch has a wide opening for easy filling.
- Attachment loop secures the pouch to your bra strap.
- Connector & cap direct the milk smoothly into the tube while preventing leaks.
- Leakproof stopper keeps milk safe inside the pouch at home or on-the-go.
- Stimulates your milk supply as baby feeds at the breast.
- Minimal parts to set up and disassemble.
- Safe in dishwashers, sterilisers and boiling water.
- BPA, PVC and phthalate-free.

Cleaning and Care:

- Before first use, disassemble and clean the product before placing silicone components in boiling water for 5 minutes to sterilise. Wash before and after each subsequent use.
- To clean the tubing, fill pouch with warm soapy water and connect the feeding tube as normal. Turn the pouch upside down and squeeze to let water flow through the tubing. Squeeze several times to flush through. Squeeze and roll tube between your fingers to ensure thorough cleaning.
- To rinse the tubing, fill pouch with drinking-quality water and connect the tube. Turn pouch upside down and squeeze the water through the tube. Repeat as necessary until clean. If any water is trapped inside the tubing after cleaning, drain the water from pouch, connect the tube then squeeze to flush it out. Clean tubing as soon as possible after feeding to prevent milk drying inside. It is important all residual moisture dries. There's no need to remove the flow controller from the tube during cleaning and sterilisation.
- To clean other parts of the product, although dishwasher safe, we recommend hand washing in warm soapy water, rinsing and drying thoroughly.
- To sterilise all parts, use a steam steriliser or boil in water for 2-3 minutes. Do not use any bleach-based agents or sterilising tablets to clean this product. Do not use a UV steriliser to clean this product as it may impact its lifespan.
- Only soft bristle brushes or soft sponges should be used to clean this product, as hard scourers may scratch the surface. Store small parts in the dedicated storage box in a cool, dry place and avoid direct sunlight.

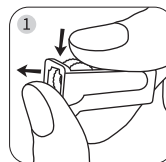
Caution:

For your child's safety and health

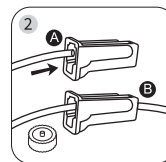
WARNING!

- Always use this product with adult supervision. Only adults should attempt to feed babies from this product.
- Always check food temperature before feeding.
- Inspect before each use. Throw away at the first signs of damage or weakness.
- Keep components not in use out of the reach of children to avoid risk of choking and strangulation.
- Never attach to your baby or your baby's clothing using any method. The child can be strangled.
- This is a single-user product. Use by more than one user without adequate cleaning may present a health risk and should be avoided.
- It's not recommended to use non-original accessories.
- Continuous and prolonged sucking of fluids will cause tooth decay.
- Take care when inserting the tube into the flow controller to avoid tearing.
- We recommend replacing the feeding tube regularly.
- To avoid risk of choking, ensure tube is well secured with provided medical tape to prevent baby dislodging it.
- This product should only be used under the advice of a lactation professional. Always consult a medical professional for further advice.
- This product is not a toy. Do not use this product for anything other than its intended use.
- Do not warm breastmilk or infant formula in a microwave oven as this may cause uneven heating and could scald the infant.
- Do not forcefully squeeze or shake the pouch at any time.

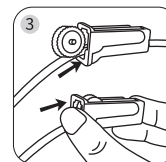
Assembly:



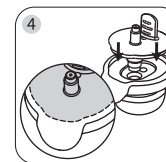
Remove the control wheel by pushing it down, then out the wider opening of the flow controller. To ensure controller wheel does not get lost, cover the wide opening with your hand as you remove it.



Push the tube through the wide opening (A) of the flow controller.



Reinsert the control wheel into the opening until it is securely in place and can be easily adjusted.



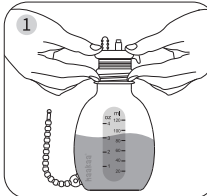
Firmly push the PP connector into the silicone cap, ensuring the protruding end of the connector is aligned with the matching opening in the cap. Check there are no gaps.

WARNING: CHOKING HAZARD - SMALL PARTS. Keep out of reach of children under 3 years.

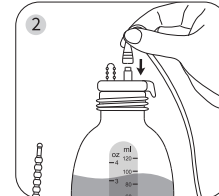
PLEASE NOTE: Tubes, flow controllers, connector and cap come assembled. In the event that a replacement is needed, please refer to Assembly.

Instructions:

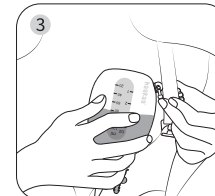
As outlined in assembly directions:



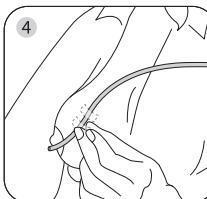
Clean the product and your hands before use. Fill pouch with supplemental milk. Push the silicone cap and connector firmly into the pouch opening.



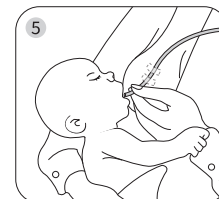
Insert the tube's wide opening firmly into the protruding duct on the PP connector. Ensure flow controller is set to the slowest setting to avoid leakage.



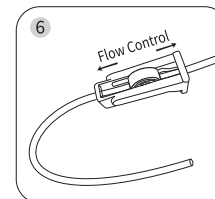
Place the pouch upside down and tie around your bra strap using the secure tie. Adjust position as needed.



Place the end of the tube 0.5cm away from your nipple and secure with the included medical tape.



Introduce your baby to your nipple. Place the end of the tube gently into their mouth to begin feeding.



To start milk flow, gently roll the flow controller wheel. Use it to manage the speed that milk flows until you find your baby's preferred rate.

PLEASE NOTE: If storing milk inside the pouch, replace the cap and connector with the leakproof pouch stopper. Always follow your country's guidelines and recommendations for safely storing breastmilk.