

Product Name: Portable Breastmilk Cooler

Materials: Tumbler Body - Stainless Steel
Tumbler Lid - Tritan, Food-Grade Silicone, Stainless Steel, PP
Storage Container - PP
Straw - Food-Grade Silicone

Dimensions: 1 x Tumbler - 900 x 900 x 240mm
1 x Storage Container - 60 x 60 x 150mm
1 x Silicone Straw - 10 x 10 x 195mm

Colours: Cream/Misty Lilac

Volume: Tumbler - 30 oz./900ml
Storage Container - 10 oz./300ml

Product Description:

Keep your breastmilk fresh and cool during transport with our Portable Breastmilk Cooler! This stainless steel thermal tumbler features a double-walled flask and a sturdy, removable PP inner storage container to keep your milk extra safe. Simply fill the tumbler with ice and cold water and pop the filled storage container inside - there's no need to pre-freeze! This portable cooler will keep your milk cool for up to 20 hours, depending on starting temperatures and how much ice you've added. The tumbler isn't just for breastmilk, though. Use it to transport work lunches or fill with your own drinks. The huge 900ml capacity tumbler also comes with a straw and lid with two mouthpieces, perfect for however you prefer to use it! The wide openings make the tumbler and container extremely easy to fill and clean. The inner storage container is safe in dishwashers and can be sterilised in boiling water.

Features:

- Provides up to 20 hours* of on-the-go cooling & storage of your breastmilk or drinks.
- Simply add ice and cold water to the tumbler (around the outside of the storage container) for effective cooling with no pre-freezing or dedicated ice packs required.
- Double-walled, vacuum-insulated stainless steel tumbler allows for extended cooling, making it ideal for busy families and outdoor use.
- Lightweight 300ml (10 oz.) storage container with clear measurements for accurate filling and safe storage.
- Doubles as a drink bottle with a larger capacity of up to 900ml (30 oz.) for all-day use.
- Leakproof cap features two dustproof mouthpieces (straw or sip) for easy drinking.
- Convenient handle and sleek shape for easy transport, carrying, or fitting into cup holders.
- Stainless steel tumbler has a wide opening, making it easy to fill and clean.
- PP storage container is safe in fridges, freezers, dishwashers and boiling water.
- BPA, PVC and phthalate-free.

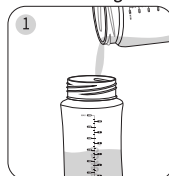
*Dependent on starting temperature and amount of ice/cold water added.

Cleaning and Care:

Disassemble all parts and clean before and after use. We recommend hand washing in warm, soapy water then rinsing and drying thoroughly. **DO NOT** microwave, boil or steam sterilise stainless steel tumbler. Do not use bleach-based cleaners or tablets to sterilise or clean your Haakaa products. Only soft bristle brushes or soft sponges should be used on this product. Hard scourers may scratch the surface. The storage container, cap and straw can be boiled in water for 2-3 minutes to sterilise. Store in a cool, dry place and avoid direct sunlight.

Instructions:

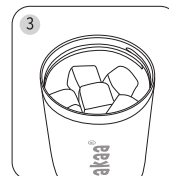
For milk storage:



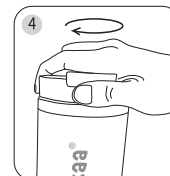
Fill the storage container with milk. Tightly screw container cap on.



Place the storage container on a thin layer of ice in the tumbler. Ensure container is as stable as possible.



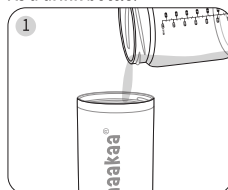
Fill the tumbler with ice, cold water or both. Do not overfill. Keep it below the bottom thread line at the opening of the tumbler.



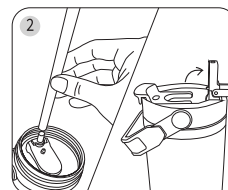
Firmly screw the lid on and take on the go.

NOTE: The amount of ice and cold water added will affect how long the contents stay cold. For longer cooling performance, use more ice whenever possible.

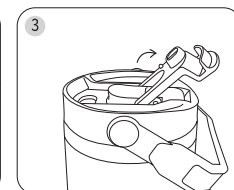
As a drink bottle:



Fill the tumbler with your chosen drink. Do not fill beyond the bottom thread line.



If using, push included straw into the straw hole on the lid. Firmly screw lid on, ensuring there are no gaps. Pull straw spout up to drink.



To use the other spout, simply flip open the dust cover and drink directly from the spout. Alternatively, transfer liquids from the spout opening to a clean cup or container.

Caution:

- Adult use only.
- Check product condition regularly. Replace if product shows any damage. Avoid dropping or hitting against hard surfaces.
- Always check the condition of stored milk, food or drink before consuming or feeding to baby. If unsure, discard.
- Stainless steel tumbler is not suitable for microwaves, boiling water, dishwashers, or steam sterilisers.
- Remove lid before filling with any liquid and ensure it is firmly screwed back in when not in use.
- To reduce risk of burns, NEVER fill with hot or boiling water then drink directly.
- ALWAYS test drink temperature before consuming.
- Do not exceed the top measurements when filling.
- Handle the lid with care to avoid pinching fingers.
- The stainless steel tumbler is not suitable for storing carbonated, acidic, high-sugar, or high-salt beverages (such as lemon water, cola, or juice) for extended periods.
- Only suitable for use with standard water ice. Do not use alternatives such as dry ice or cryogenics.

PLEASE NOTE: Always follow your country's guidelines and recommendations to safely express and store breastmilk. Volume measurements are approximations and should be used for general reference only. Please do not fill contents over the top measurement mark.