

**Product Name:** Supplemental Feeding Tube & Pouch Set

**Materials:** Silicone Feeding Tubes, Pouch, Cap, Stopper - Food-Grade Silicone  
Tube Connector, Storage Case, Flow Switches (S) - PP  
Flow Controllers (L) - PP, PE  
Medical Tape - Nonwoven Fabric

**Contents:** 3 x Feeding Tubes (S) - 11 x 10 x 400mm  
- feeding end diameter: 1.6mm  
2 x Feeding Tubes (L) - 11 x 11 x 400mm  
- feeding end diameter: 2.5mm  
1 x Feeding Pouch - 117 x 108 x 44mm  
1 x Pouch Cap - 43 x 38 x 24mm  
1 x Pouch Stopper - 36 x 36 x 61mm  
1 x Tube Connector - 35 x 34 x 26mm  
2 x Flow Switches (S) - 22 x 17 x 17mm  
1 x Flow Controller (L) - 41 x 13 x 13mm  
1 x Medical Tape - 9100 x 13mm  
1 x Storage Case - 72 x 71 x 36mm

**Volume:** 4 oz./120ml

**Product Description:**

If you and your baby are experiencing feeding issues, including latching or supply concerns, then Haakaa's Supplemental Feeding Tube & Pouch Set is the ideal way to provide extra supplemental milk quickly, easily and safely. The 120ml pouch and tubes in two different sizes are made of non-toxic 100% food-grade silicone, and the wide pouch opening makes it easy to fill and clean. The pouch even includes a convenient attachment loop to keep it secure during feeding time, while two types of flow controllers allow you to adjust the milk flow to suit your baby's needs. This set also includes medical tape to secure the tube to your breast and a handy storage case to keep all the smaller parts neatly tidied away!

**Features:**

- Provides extra supplemental milk to baby, while also allowing mum and baby to continue breastfeeding.
- Multiple soft, flexible tubes in two sizes to suit different needs mean you've always got one available.
- 1 x large flow controller and 2 x small flow switches allow for easy adjustment of milk flow.
- 120ml squeezable pouch has a wide opening for easy filling.
- Attachment loop secures the pouch to your bra strap.
- Connector & cap direct milk smoothly into the tube while preventing leaks.
- Leakproof stopper keeps milk safe inside the pouch at home or on the go.
- Stimulates your milk supply as baby feeds at the breast.
- Minimal parts to set up and disassemble.
- Safe in dishwashers, sterilisers and boiling water.
- BPA, PVC and phthalate-free.

**Cleaning and Care:**

- Before first use, disassemble and clean all parts of this product before placing silicone components in boiling water for 5 minutes to sterilise. Wash before and after each subsequent use.
- To clean the tubing, fill pouch with warm soapy water and connect the feeding tube as normal. Turn the pouch upside down and squeeze to let water flow through the tubing. Squeeze several times to flush through. Squeeze and roll tube between your fingers to ensure thorough cleaning.
- To rinse the tubing, fill pouch with drinking-quality water and connect the tube. Turn pouch upside down and squeeze the water through the tube. Repeat as necessary until clean. If any water is trapped inside the tubing after cleaning, drain the water from pouch, connect the tube then squeeze to flush it out. Clean tubing as soon as possible after feeding to prevent milk drying inside. It is important all residual moisture dries.
- To clean other parts of the product, although dishwasher safe, we recommend hand washing in warm soapy water, rinsing and drying thoroughly.
- To sterilise all parts, use a steam steriliser or boil in water for 2-3 minutes. Do not use any bleach-based agents or sterilising tablets to clean this product. Do not use a UV steriliser to clean this product as it may impact its lifespan.
- Only soft bristle brushes or soft sponges should be used to clean this product, as hard scourers may scratch the surface. Store small parts in the dedicated storage box in a cool, dry place and avoid direct sunlight.

**Caution:**

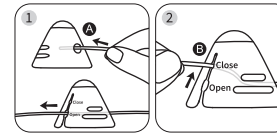
**For your child's safety and health**

**WARNING!**

- Always use this product with adult supervision. Only adults should attempt to feed babies from this product.
- Always check food temperature before feeding.
- Inspect before each use. Throw away at the first signs of damage or weakness.
- Keep components not in use out of the reach of children to avoid risk of choking and strangulation.
- Never attach to your baby or your baby's clothing using any method. The child can be strangled.
- This is a single-user product. Use by more than one user without adequate cleaning may present a health risk and should be avoided.
- We do not recommend using this product with third-party accessories.
- Continuous and prolonged sucking of fluids will cause tooth decay.
- Take care when inserting the tubes into the flow controller/switches to avoid tearing.
- We recommend replacing feeding tubes regularly.
- To avoid risk of choking, ensure tube is well secured with provided medical tape to prevent baby dislodging it.
- This product should only be used under the advice of a lactation professional. Always consult a medical professional for further advice.
- This product is not a toy. Do not use this product for anything other than its intended use.
- Do not warm breastmilk or infant formula in a microwave oven as this may cause uneven heating and could scald the infant.
- Do not forcefully squeeze or shake the pouch at any time.

**Assembly:**

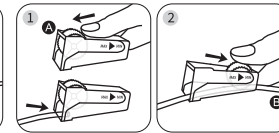
**Size S:**



Insert the small tube through the hole on one side (A) of the small flow switch. Pull it through the hole and adjust the length as needed.

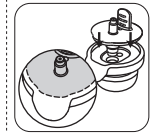
Snap the tube into the slot on the other side (B). Pull the tube into the 'Close' position.

**Size L:**



Roll the controller wheel to the end (A). Push the large tube through the wide opening (A) of the large flow controller.

Pull the tube to its desired position, then roll the flow controller wheel to the other end (B), ensuring there are no gaps.



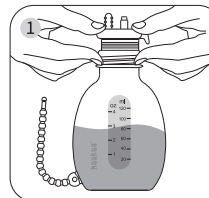
Firmly push the PP connector into the silicone cap, ensuring the protruding end of the connector is aligned with the matching opening in the cap. Check there are no gaps.

**TIP:** Use only the same size tube and flow switch/controller together. Mixing different sizes may affect performance and cause damage.

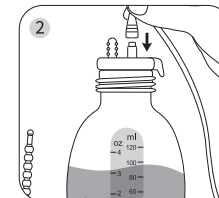
**WARNING: CHOKING HAZARD - SMALL PARTS.** Keep out of reach of children under 3 years.

**PLEASE NOTE:** Tubes, flow controller, connector and cap come assembled. In the event that reassembly is needed, please refer to assembly instructions listed above. The small flow switch is designed to start/stop milk flow and does not adjust speed. We recommend pulling the tube upwards to the 'Open' position when the bottle is empty and the tube is not in use to avoid potential deformation.

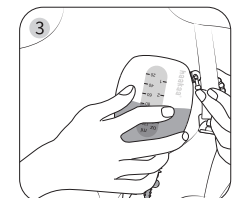
**Instructions:**



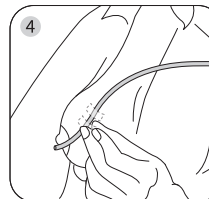
Clean the product and your hands before use. Fill pouch with supplemental milk. Push the silicone cap and connector firmly into the pouch opening.



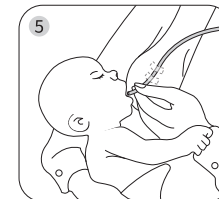
Insert the tube's wide opening firmly onto the protruding duct on the PP connector. Ensure flow controller/switch is set to the slowest setting to avoid leakage.



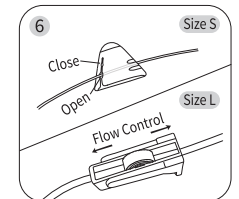
Place the pouch upside down and tie around your bra strap using the secure tie. Adjust position as needed.



Place the end of the tube 0.5cm away from your nipple and secure with the included medical tape.



Introduce your baby to your nipple. Place the end of the tube gently into their mouth to begin feeding.



**Size S:** To start milk flow, gently pull the tube along the groove to fit the 'Open' position. To pause the flow, pull the tube inside the groove into the 'Close' position.

**Size L:** To start milk flow, gently roll the flow controller wheel. Adjust the position to manage the milk flow speed until you find your baby's preferred rate.

**PLEASE NOTE:** If storing milk inside the pouch, replace the cap and connector with the leakproof pouch stopper. Always follow your country's guidelines and recommendations for safely storing breastmilk.