

**haakaa**

# SILICONE BREAST PUMP & CAP SET

## Product Manual English

**Product Name:** Silicone Breast Pump & Cap Set

**Material:** Food-Grade Silicone

**Dimensions:** 100ml Gen. 2 Pump - 84 × 84 × 155mm  
150ml Gen. 2 Pump - 84 × 84 × 170mm  
Pump Cap - 85 × 85 × 12mm

**Cap Colours:** Blush/Grey/Lavender

### Product Description:

The Haakaa Gen. 2 Silicone Breast Pump is made of a single piece of high-quality food-grade silicone and provides an easy, eco-friendly and effective pumping experience! Forget loud, expensive electric pumps that need to be pulled to pieces for complicated cleaning routines every time you use them - the Haakaa Silicone Breast Pump will change your life! Its compact size fits perfectly into most bags and requires no hard work to use.

Available in two larger capacities of 100ml and 150ml and featuring a handy suction base that sticks to flat surfaces to prevent accidental spills, this pump is the easiest, simplest way to express breastmilk.

Our pump is perfect for home and travel, including on planes, car rides, family gatherings, or anywhere else you want to express discreetly, silently and quickly. Simply attach the pump to your breast and let it do the work for you as it draws your milk using natural suction. It's 100% eco-friendly and is safe for mum, baby and our environment. Our Silicone Cap is designed to seal tightly around the pump flange to prevent any accidental spills and stop any airborne nasties from settling inside the pump between uses.

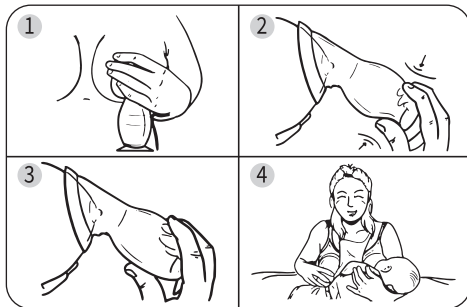
### Features:

- Express breastmilk using the power of continuous suction!
- Soft and comfortable 100% food-grade silicone.
- Compact size to fit perfectly into most handbags and baby bags.
- Fits a wide range of breast shapes and sizes.
- Silicone suction base prevents the pump from tipping over.
- No cords, batteries or assembly required.
- Silicone Cap fits securely over the pump flange to prevent accidental spills and keep dust & other airborne nasties out between uses.
- Easy to use and clean.
- BPA, PVC and phthalate-free.

### Instructions:

1. Sterilise your pump by using any steam steriliser or boiling in water for 2-3 minutes.
2. Place the pump flange over your nipple - make sure your nipple is centred comfortably in the neck of the pump.
3. Apply suction by squeezing the base of the pump then releasing. You may need to adjust the position of your pump to ensure it remains comfortable.
4. Once milk begins to flow, simply leave the pump alone to do its thing!
5. When the pump is full, empty into a clean, sterilised storage container or bottle and reposition.
6. If the flow of milk slows or you've expressed your desired amount, simply stick the suction base to a flat surface while your baby finishes feeding or you re-dress.

**TIPS:** Encourage let-down by placing a warm flannel on top of your breast and massaging gently. While your child is feeding, attach your Haakaa pump to the other breast to catch precious milk that would otherwise be lost in a nursing pad.



Step-by-step diagram

To get even more suction from your pump, fold back the flange to expose the neck of the pump. Centre the opening over your nipple and squeeze the pump as normal to generate suction. Once attached, return the flange to its original position.

### Cleaning and Care:

Wash before and after each use. Although dishwasher safe, we recommend hand washing with warm, soapy water and rinsing thoroughly. To sterilise, use a steam steriliser or boil in water for 2-3 minutes. Only soft bristle brushes or soft sponges should be used to clean this product as hard scourers may scratch the surface. Do not use any bleach-based cleaners or tablets to clean or sterilise your Haakaa products. Store product in a cool dry place and avoid direct sunlight.

### Caution:

- ⊙ Check product condition regularly. Replace if this product shows any signs of damage.
- ⊙ Adult use only.
- ⊙ This product is not a toy. Do not use this product for anything other than its intended use.
- ⊙ Keep out of reach of children and pets when not in use.
- ⊙ Do not store near any sharp objects.
- ⊙ When cap is on, do not squeeze pump as this may cause cap to pop off.

**PLEASE NOTE:** Always follow your country's guidelines and recommendations to safely express and store breastmilk. Volume measurements are an approximation and should be used for general reference only.