

# SILICONE NIPPLE ASPIRATORS

## PRODUCT MANUAL English

**Product Name:** Silicone Nipple Aspirators

**Material:** Food-Grade Silicone

**Dimensions:** 35 × 35 × 24mm

**Contents:** 2 × Silicone Nipple Aspirators

1 × Protective Case

**Suitable For:** Inverted or Flat Nipples

### Product Description:

Mother's nipples come in many shapes and sizes, and while many nipples protrude outwards, making latching easy, a high percentage of women with flat or inverted nipples require a bit of assistance. If you're encountering issues, or your baby is struggling to latch onto a flat or inverted nipple, then our Silicone Nipple Aspirators may be just the solution you're looking for!

Haakaa Silicone Nipple Aspirators are made from 100% non-toxic food-grade silicone and are designed to gently pull your nipple outwards using natural suction. Simply pinch the sides or compress the dome of the aspirator and place over your nipple before breastfeeding. The suction will gently draw out your nipple, making latching a breeze!

### Features:

- Utilises natural suction to gently draw out flat or inverted nipples, making latching a breeze!
- Simple to use - just compress, then place over the nipple prior to breastfeeding.
- Effective one-handed operation for easy, pain-free suction adjustment.
- Soft, flexible food-grade silicone is safe and skin-friendly for your breast.
- Suitable for most nipple sizes, and small enough to fit discreetly in your bra.
- Safe in microwaves, boiling water and sterilisers.
- Includes one pair of nipple aspirators and a protective case for storage.
- BPA, PVC and phthalate-free.

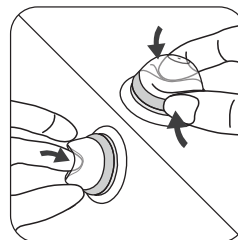
### Cleaning and Care:

Before first use, clean the product and boil in water for five minutes to sterilise. Do not boil the protective case. Wash before and after each use. Although dishwasher safe, we recommend hand washing in warm soapy water and rinsing and drying thoroughly. Do not use bleach-based cleaners or tablets to clean this product. To sterilise, use a steam steriliser or boil in water for 2-3 minutes. Do not use UV sterilisers to clean this product as it may impact its lifespan.

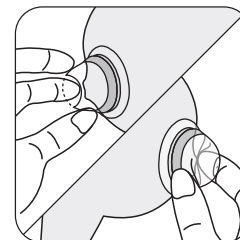
### Caution:

- Nipple Aspirators MUST be removed from the nipple before your baby latches to feed.
- Results are not permanent and need to be repeated before each feed.
- Check product condition regularly. Replace if this product shows any signs of damage.
- Do not store near any sharp objects.
- Only soft bristle brushes or soft sponges should be used to clean this product. Hard scourers may scratch the surface.
- This product contains small parts that may present a choking hazard if children are left unattended.
- This product is not a toy. Do not use this product for anything other than its intended purpose.
- Store product in a cool, dry place and avoid direct sunlight.

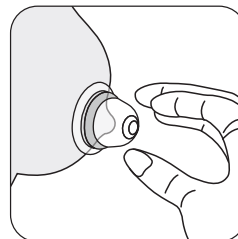
### Instructions:



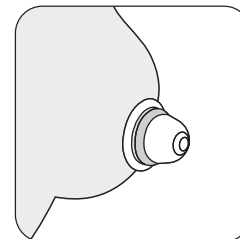
**1** Pinch the sides or compress the dome of the aspirator.



**2** Center and place the aspirator over your nipple.



**3** Release your grip, allowing the suction to draw out your nipple.



**4** Repeat as required until your nipple is ready for latching. Ensure aspirator is removed before feeding your baby.

**Note:** Haakaa recommends using aspirators for a few minutes before breastfeeding. Suction strength can be varied by adjusting pressure when pinching the sides/dome.