

haakaa®

SILICONE YUMMY POUCH

Product Manual

MHK129 / MHK130 / MHK133 E08797

English

Product Name: Silicone Yummy Pouch
Material: Food-Grade Silicone
Dimensions: Pouch - 94 x 38 x 131mm
Sippy Spout - 73 x 46 x 51mm
Straw - 14 x 14 x 150mm
Volume: 4 oz./130ml
Colours: Grey/Lemon/Lime/Mist Blue
Quantities: 1pc/2pcs/4pcs
Recommended Age: 6 months+

Product Description:

Let your little one snack anywhere, anytime with Haakaa's Silicone Yummy Pouch! Made of 100% food-grade silicone that can be reused over and over again, our easy-squeeze pouch is perfect for taking homemade goodness out and about. It offers all the convenience of store-bought food pouches with none of the plastic nasties or environmental impact! Featuring a 130ml capacity, our Yummy Pouch is the perfect size for little tummies and ideal for encouraging self-feeding. Stash in your child's lunchbox or carry in your baby bag – the leakproof lid prevents any spills or mess on-the-go! It has a wide neck and stands upright for easy filling, and can be popped in the dishwasher for super simple cleaning. The Silicone Yummy Pouch sippy spout is compatible with Haakaa's range of Milk Storage Bags & Pouches (sold separately).

Features:

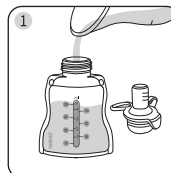
- Reusable, eco-friendly alternative to single-use plastic food pouches.
- Soft yet durable 100% food-grade silicone that's gentle on little mouths.
- Leakproof lid prevents spills when out and about.
- X-cut variable flow mouthpiece lets your baby enjoy their food at their own pace.
- Easy-carry strap for portability.
- Stands upright with a wide neck for easy filling.
- Clear measurements on the side of pouch to keep track of intake.
- The perfect size for little tummies!
- Includes a drinking straw for thinner purées.
- Easy-care design with no folds or joints for fuss-free cleaning.
- Compatible with Haakaa's range of Silicone Milk Storage Bag & Pouch attachments (sold separately) – adapts with baby's changing needs.
- Fridge, freezer, microwave and dishwasher safe.
- BPA, PVC and phthalate-free.

Cleaning and Care:

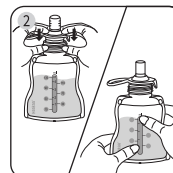
Before first use, disassemble and clean the product, then place the components in boiling water for 5 mins. This is to ensure hygiene. After use, please wash and flush all parts thoroughly with clean water to remove any food residue, including all areas where food has passed through. Wash before and after use. Although dishwasher safe, we recommend disassembling this product and washing in warm soapy water, then rinsing. Only soft bristle brushes or soft sponges should be used to clean this product, as hard scourers may scratch the surface. Please do not use bleach-based cleaners or tablets to clean this product. To sterilise, use a steam steriliser or boil in water for 2-3 minutes. Other common methods of heating, cleaning, storage and use not listed in this manual may damage the product. Store product in a cool, dry place and avoid direct sunlight.

PLEASE NOTE: Volume measurements are an approximation and should be used for general reference only.

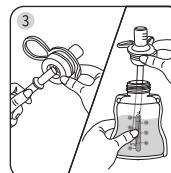
Instructions:



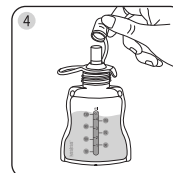
Stand the Silicone Yummy Pouch upright and pour contents into the opening.



Plug the sippy spout into the pouch opening. Now simply squeeze the pouch to feed!



THINNER PURÉES: remove the sippy spout and insert the straw (unnotched end) up through the bottom of the X-cut opening. Make sure the shield fits snugly against the X-cut. Once inserted, plug back into the pouch.



Cover the spout when not feeding.

Optional Interchangeable Attachments

Compatible with our range of Silicone Milk Storage Bag & Pouch attachments to grow with your child's needs (sold separately).



- a** Silicone Leakproof Stopper
- b** Silicone Squeeze & Feed Attachment Set
- c** Silicone Feeding Spoon Attachment
- d** Silicone Yummy Pouch Sippy Spout

Caution:

For your child's safety and health

WARNING!

- Continuous and prolonged sucking of fluids may cause tooth decay.
- Always check food temperature before feeding.
- Check product condition regularly. Throw away at the first signs of damage or weakness.
- Keep components not in use out of the reach of children.
- For your child's safety, never attach product to cords, ribbons, laces or loose parts of clothing, as it can become wrapped around their neck.
- Do not store near any sharp objects.
- This product is not a toy. Do not use this product for anything other than its intended use.
- Always use this product with adult supervision.
- Do not fill pouch beyond top measurement mark.
- Do not forcefully squeeze or shake the pouch at any time, as this may cause contents to leak.
- Always remove sippy spout, straw and lid when microwave heating.
- Take extra care when microwave heating; localised overheating can occur. Always mix the heated food and check the temperature before feeding.
- For use with breastmilk only. Not to be used for mixing formula milk.
- Straws are not suitable for a child under 6 months.