

**Product Name:** Pump, Collect & Sterilise Combo

**Materials:** Shell Pump, Ladybug Collector - Medical-Grade Silicone  
Multipurpose Steamer & Steriliser Bag - Food-Grade Silicone

**Dimensions:** 1 × 75ml Shell Pump - 79 × 63 × 95mm  
1 × 75ml Ladybug Collector - 95 × 63 × 85mm  
1 × 750ml Steriliser Bag - 219 × 79 × 169mm

**Volume:** Shell Pump - 2.5 oz./75ml  
Ladybug Collector - 2.5 oz./75ml  
Steriliser Bag - 25 oz./750ml

### Product Description:

Love the idea of a wearable breast pump, but want the option to try the super-popular Ladybug as well? This combo is for you!

The Shell is a wearable breast pump - ideal for those days when you need to pump but have things to do. Simply press the back, attach it to your breast, pop on your bra and get on with your day! Decrease suction strength by pressing the valve, or increase by pressing the back of the Shell while it's in your bra.

Meanwhile, the Haakaa Ladybug is the perfect breast pad alternative for mums who want to save every drop of leakage and let-down instead of soaking it up! The one-piece design attaches to your breast with barely-there suction and sits securely and discreetly in your bra. This light suction won't draw out additional milk, so it's ideal for mums who leak breastmilk and want to save it without increasing their supply.

Both feature an easy-pour outlet to transfer your precious liquid gold without mess.

Easy to use, easy to clean, and when it comes time to sterilise, simply use the Multipurpose Steamer & Steriliser Bag included in this combo! Just fill the bag to the indicated water line, pop in your microwave-safe items, seal it shut, and place in the microwave for quick, simple sterilisation!

### Features:

- The Shell doubles as a manual pump and a passive milk collector.
- The Ladybug is the ultimate reusable breast pad alternative - passively collects every drop without affecting supply.
- Discreet and comfortable pumping or collection - day and night.
- Ultra-soft patented design safeguards sore nipples.
- Fits a wide range of breast shapes and sizes.
- Convenient outlet easily pours collected milk and prevents spills during transfer.
- The Shell's one-way valve allows control over suction strength without removing from your bra.
- Reusable and durable Multipurpose Steamer & Steriliser Bag makes for effortless sterilisation.
- Versatile bag functions as a steam steriliser for baby gear/household items, a food steamer or a handy travel/storage bag.
- Bag features a foldable design for compact storage and an easy-carry handle.
- BPA, PVC and phthalate-free.

### Cleaning and Care:

Wash before and after each use. Although dishwasher safe, we recommend hand washing with warm, soapy water and rinsing thoroughly. To clean the Shell valve, use a small brush or run clean, warm water directly through it to thoroughly flush it out. To sterilise, use a steam steriliser or boil in water for 2-3 minutes. When sterilising the Shell/Ladybug, ensure the outlet is unplugged to prevent potential deformation of the silicone. Only soft bristle brushes or soft sponges should be used to clean these products as hard scourers may scratch the surface. Do not use any bleach-based cleaners or tablets to clean or sterilise your Haakaa products. Store product in a cool, dry place and avoid direct sunlight.

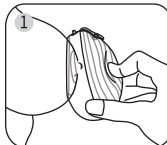
### Caution:

- For adult use only.
- Before each use, inspect the product. Throw away at the first sign of damage or weakness.
- This product is not a toy. Do not use this product for anything other than its intended use.
- Keep out of reach of children and pets when not in use.
- Do not store near any sharp objects.
- Do not use the Shell/Ladybug while exercising or operating heavy machinery.
- Do not lean forward or lie down with plug open, as your milk may spill out the top.
- Be sure to follow the instructions provided, as heating for longer than recommended may warp the bag's contents.
- Only fill to the indicated water line (100ml) when sterilising. Sterilisation may not be effective, or contents may warp, if using more or less water than instructed.
- Your silicone products may grow cloudy after repeated use, especially in hard water areas. This is normal and will not affect the performance of your product.

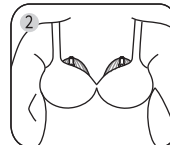
**PLEASE NOTE:** Volume is an approximation and should be used for general reference only. Always follow your country's guidelines and recommendations for safely expressing and storing breastmilk.

### Instructions:

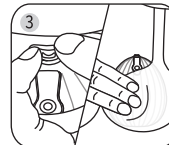
#### Shell Wearable Silicone Breast Pump:



**Ensure the valve is unobstructed.** With the plug closed, centre the main opening over your nipple. It should feel comfortable and your nipple should not be pushing against any part of the Shell.



Press and release the back of the Shell to create suction. Position and pull your bra over the Shell. Make sure it's still firmly in place with no gaps around the edges.



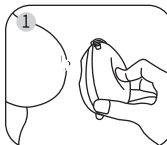
Adjust suction as needed. Decrease by gently pressing the valve. Increase by pressing the centre back of the Shell. Suction may need to be increased several times while pumping. Be cautious of milk level before pressing.



If you want to use it as a passive collector and apply it with no suction - simply press the valve to release all the pressure, or open the plug before placing it onto your breast. Always secure the Shell in your bra.

**NOTE:** Suction can be adjusted by applying different pressure on the back of the Shell. Be sure to keep an eye on the milk level to make sure it doesn't overflow.

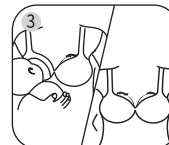
#### Ladybug Silicone Breast Milk Collector:



With the plug closed, centre the main opening over your nipple and gently press down on the back of the Ladybug.



Press to your breast to create gentle suction and begin collecting let-down. The Ladybug should always be worn inside your bra.



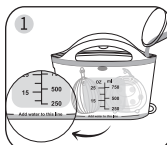
Wear one Ladybug on the opposite breast to save let-down while nursing, or one on each breast to collect leakage.



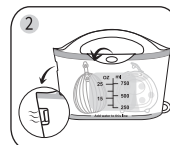
The Ladybug can be worn while lying down - please lie on the opposite side to whichever breast the Ladybug is attached to.

**NOTE:** Suction is optional and helps to keep the Ladybug in place in your bra - it **WON'T** draw out extra milk. If your breasts are more sensitive to suction, simply open the plug before placing into your bra. Do not lean forward or lie down with plug open as milk may spill out.

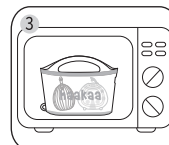
#### Multipurpose Steamer & Steriliser Bag:



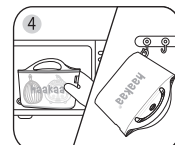
Using clean water, fill to the indication line on the steriliser bag, then place the (cleaned) Shell, Ladybug or other microwave-safe items into the bag.



Close the sealing strip, then secure the centre buckle. Ensure the vent on the side is unobstructed.



With the bag standing upright, microwave on high power in the centre of the microwave, following the provided timing guide.  
**NOTE:** During sterilisation, seal may open. This is normal. Ensure the buckle is fastened correctly to keep contents secure.



Allow to cool for 2 minutes then remove from microwave using oven mitts. Open away from face to release steam and carefully drain remaining water. Remove items using clean hands or tongs, taking care to avoid burns. Dry bag fully before storing.

**NOTE:** As silicone can stick to itself, the vent opening may seal. To fix this, very gently rub the vent between your fingers to unstick (when bag is cool).

Microwave Times for Sterilising	
500 - 720W	7 minutes
800 - 1100W	4 minutes
1100W +	3 minutes

\*Be sure to follow timing instructions as heating longer than recommended may distort the shape of the items inside or cause damage. If unsure about your microwave's wattage, check with your manufacturer.

### WARNING:

Ensure the vent on the side remains unobstructed at all times. Use caution when removing the bag from the microwave - we recommend using oven mitts. It will be filled with hot water and steam, which may cause serious burns. **DO NOT** tip bag when removing from microwave.