

**haakaa®**

# SILICONE BABY FOOD DISPENSING SPOON

## Product Manual English

UTE23 E08282

**Product Name:** Silicone Baby Food Dispensing Spoon  
**Materials:** Food-Grade Silicone, PP  
**Dimensions:** 50 x 50 x 195mm  
**Volume:** 4oz./120ml  
**Colours:** Peach/Grey  
**Recommended Age:** 4 months+  
**Standard:** EN 14372

### Product Description:

The Haakaa Baby Food Dispensing Spoon is the perfect way to take your homemade baby food out with you without the hassle of carrying separate spoons and plastic containers! Our dispensing spoon lets you feed your little one homemade goodness without mess or waste. To use, simply fill the tube with baby food and pop on the sealing disk and lid. The food will remain inside the leakproof silicone tube until it's time for a snack! Remove the sealing disk, pop the spoon back on, and gently squeeze the tube to dispense your food. Once you're done, put the lid and disk back on and store like usual!

### Features:

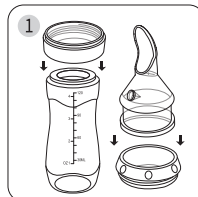
- Easily control the flow of food with a simple squeeze.
- Cross-cut valve accommodates everything from thinner liquids to thicker, chunkier purées.
- Soft, flexible, shallow silicone spoon dispenses food one bite at a time while being gentle on baby's mouth.
- 120ml capacity for little tummies starting solids.
- Smart valve on the spoon helps the bottle return its shape quickly for efficient feeding.
- Airtight sealing disk and leakproof lid are perfect for keeping food fresh and preventing spills while out and about.
- Easy to use – simply place tube in hot water to warm food.
- Clear measurements on the side of the tube to keep track of intake.
- All parts dismantle for easy cleaning; fridge, freezer, steriliser and dishwasher safe.
- Mess and waste-free.
- BPA, PVC and phthalate-free.

### Cleaning and Care:

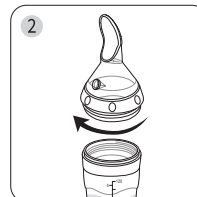
Clean after each use. Although dishwasher safe, we recommend hand washing in warm soapy water, then rinsing. Only soft bristle brushes or soft sponges should be used to clean this product, as hard scourers may scratch the surface. To sterilise, use a steam steriliser or boil in water for 2-3 minutes. Do not use any bleach-based cleaners or tablets to clean or sterilise this product. Store product in a cool, dry place and avoid direct sunlight.

**PLEASE NOTE:** Volume measurements are an approximation and should be used for general reference only. Solid food is recommended for babies 4-6 months+. Always consult your medical professional for advice regarding infants and food allergies, or if planning to introduce solids earlier than recommended.

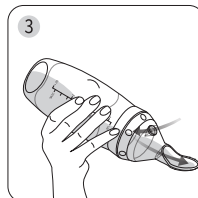
### Instructions:



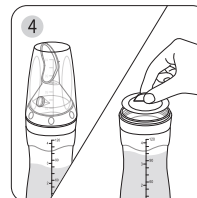
Place bottom attachment ring on the tube opening. Insert the spoon head into dispensing tube's attachment ring.



Fill tube with food, taking care not to exceed the top measurement mark. Screw the spoon head and attachment ring on the tube.



Squeeze the desired amount of food out of the tube and feed the spoon to your baby. Ensure the valve on the spoon head is unobstructed at all times.



When not in use, put on the snap-tight lid to cover the spoon.

**NOTE:** Place sealing disk on to prevent food spills while out and about.

### Caution:

#### For your child's safety and health

#### WARNING!

- Always use this product with adult supervision.
- Before each use, inspect this product. Throw away at the first sign of damage or weakness.
- Always check food temperature before feeding.
- Do not store near any sharp objects.
- This product is not a toy.
- Do not use this product for anything other than its intended use.
- Take extra care when microwave heating; localised overheating can occur. Always mix heated food or liquid to avoid hot spots before feeding.
- Do not fill tube beyond top measurement mark.
- Do not forcefully squeeze or shake the dispenser at any time, as this may cause contents to leak.
- If food is stuck inside, GENTLY squeeze the tube and the neck of the spoon (where the valve is) at the same time to let the food out.
- Ensure the vent on the spoon head is unobstructed at all times.